



New Jersey's Clean Energy Program™



Clean Energy and Efficiency Opportunities for Residential,
Commercial, Industrial, and Institutional Buildings

October 28, 2020



Energy Efficiency Here & Now: Financial Incentives Make the Difference



October 28, 2020

New Jersey's
Clean Energy Program™

Lighting the way to New Jersey's Clean Energy Future

Agenda

Energy Efficiency Here & Now:

- Conserve Energy, Save Money & Clean the Environment

Financial Incentives Make the Difference:

- NJCEP Portfolio of Commercial & Industrial Programs
- Utility Programs
 - South Jersey Gas Portfolio of Commercial Energy Efficiency Programs
- NJ Businesses are Benefiting – Hutchinson Mechanical Services

NJCEP Background

ADMINISTERED BY

New Jersey Board of Public Utilities' Division of Clean Energy

FUNDING

Societal Benefits Charge (SBC) on utility bill

PROGRAM GOALS

- Education
- Change behavior
- Provide opportunity for ALL NJ residents to reduce energy and lower operating cost
- Protect the environment and lower emissions
- Meet Governor's goal of 100% clean energy by 2050



Programs to Meet Goals



CUSTOMER EDUCATION



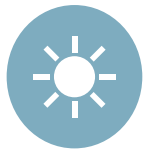
ENERGY CONSERVATION



ENERGY EFFICIENCY



DISTRIBUTED ENERGY RESOURCES



RENEWABLE ENERGY

Business Ombudsman

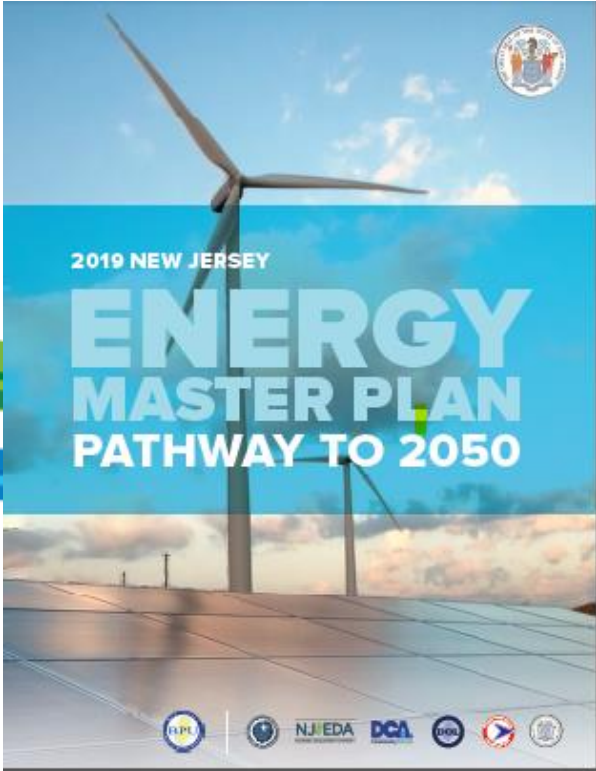
The Office of the NJBPU Business Ombudsman is a legislatively-mandated office within the New Jersey Board of Public Utilities. The Ombudsman's mission is to assist the state's commercial and industrial energy users in managing their energy costs through a strategic approach to efficiency, renewable technologies and supply purchasing.

The office can assist businesses with requests regarding incentives, act as a liaison between businesses and the state if questions regarding energy use occur, and can provide informational sessions about our incentive programs.

The office can be reached at ombudsman@bpu.nj.gov

NJ ENERGY MASTER PLAN

www.nj.gov/emp



Energy Master Plan (EMP)

www.nj.gov/emp

- The Energy Master Plan was released on January 27, 2020
- Received significant stakeholder engagement throughout the process
- Comprehensive roadmap to meet our goals
- Seven Strategies to get New Jersey to 100% Clean Energy by 2050

EMP: The Seven Strategies

www.nj.gov/emp

1. Reduce Energy Consumption and Emissions from the Transportation Sector
2. Accelerate Deployment of Renewable Energy and Distributed Energy Resources
3. Maximize Energy Efficiency and Conservation and Reduce Peak Demand
4. Reduce Energy Consumption and Emissions from the Building Sector

EMP: The Seven Strategies (cont.)

www.nj.gov/emp

5. Decarbonize and Modernize New Jersey's Energy Systems
6. Support Community Energy Planning and Action with and Emphasis on Encouraging Participation by Low- and Moderate-Income and Environmental Justice Communities
7. Expand the Clean Energy Innovation Economy



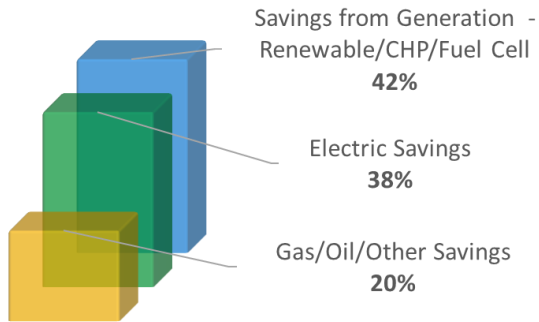
PROGRAM HIGHLIGHTS

Program Performance...

FY19 data



131,000+ applications processed in FY19



Energy Savings are delivered through electric, gas, oil, other efficiencies and generation



\$136,000,000+ incentives paid in FY19

...Brings Real-World Results

FY19 data

Clean Energy Programs eliminated enough CO₂ to equate to:



96,000+ cars removed



7,400,000+ trees planted



452,616 metric tons greenhouse gases eliminated

NJCEP Portfolio of Programs

RENEWABLE ENERGY

- Offshore Wind
- TREC - Solar Registration
- Community Solar



SPECIALIZED ENERGY EFFICIENCY

- Community Energy Grants
- State Facility Initiatives
- R&D Energy Tech Hub *
- Workforce Development*



COMMERCIAL & INDUSTRIAL

- Energy Audits
- Energy Efficiency Incentives
- Trade Allies



DISTRIBUTED ENERGY RESOURCES

- Combined Heat & Power – Fuel Cells
- Microgrid Development
- Battery Storage*
- Electric Vehicles



RESIDENTIAL

- New Construction
- Existing Homes
- Energy Efficient Products
- Trade Allies



** coming soon!*

RENEWABLE ENERGY



NJ Offshore Wind

NJCleanEnergy.com/OFFSHOREWIND

- Goal: 7500 MW by 2035
- Ørsted's 1100 MW Ocean Wind project was awarded in June 2019
 - Largest award for a single project in the United States
 - Generate \$1.17 billion in economic benefits
 - Create an estimated 15,000 jobs
 - Power approximately 500,000 homes

Solar Transition Incentive (TI) Program

NJCleanEnergy.com/TI

- The TI program is a bridge between the legacy SREC Program and a to-be-determined successor incentive program
- The TI program consists of fixed-price, 15-year Transition Renewable Energy Certificates (TRECs)

Solar TI Program: TREC Factors

NJCleanEnergy.com/TI

- The Transition Incentive structures the TRECs to allow for differentiated financial incentives for different types of solar installations
- TRECs are factored by project type:

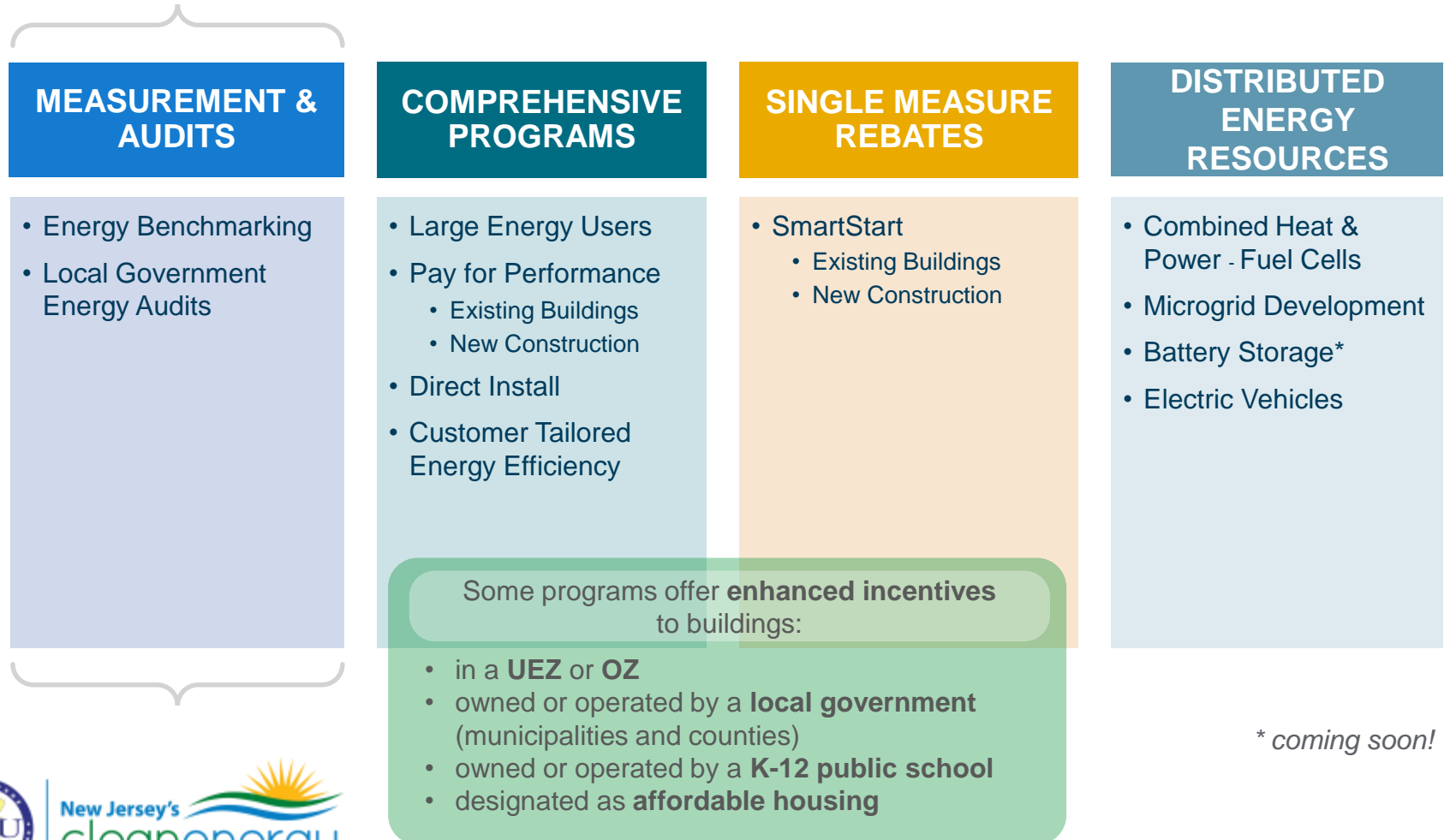
Project Type	Factor
Subsection (t): landfill, brownfield, areas of historic fill	1.0
Grid supply rooftop	1.0
Net metered non-residential rooftop and carport	1.0
Community solar	0.85
Grid supply ground mount	0.6
Net metered residential ground mount	0.6
Net metered residential rooftop and carport	0.6
Net metered non-residential ground mount	0.6

C&I PROGRAMS



C&I Portfolio of Programs

Eligible Sectors: Commercial, Industrial, Government, Schools, Non-Profit, Institutional and Multifamily



Enhanced Incentives

Some programs offer **enhanced incentives** to buildings:

- in a **UEZ** or **OZ**
- owned or operated by a **local government** (municipalities and counties)
- owned or operated by a **K-12 public school**
- designated as **affordable housing**

Press Room | Library | FAQs | Calendar | Newsletters | Contact Us | Search

BPU New Jersey's **cleanenergy** program™

HOME RESIDENTIAL COMMERCIAL, INDUSTRIAL, LOCAL GOV & MULTIFAMILY RENEWABLE ENERGY

NEW JERSEY'S CLEAN ENERGY PROGRAM

ABOUT NJCEP

BOARD OF PUBLIC UTILITIES

REBATES AND PROMOTIONS

NJCEP POLICY UPDATES & REQUEST FOR COMMENTS

About New Jersey's Clean Energy Program

New Jersey's Clean Energy Program is a statewide program that offers financial incentives, programs and services for New Jersey residents, business owners and local governments to help them save energy, money and the environment.

● **Rebate QuickLinks**

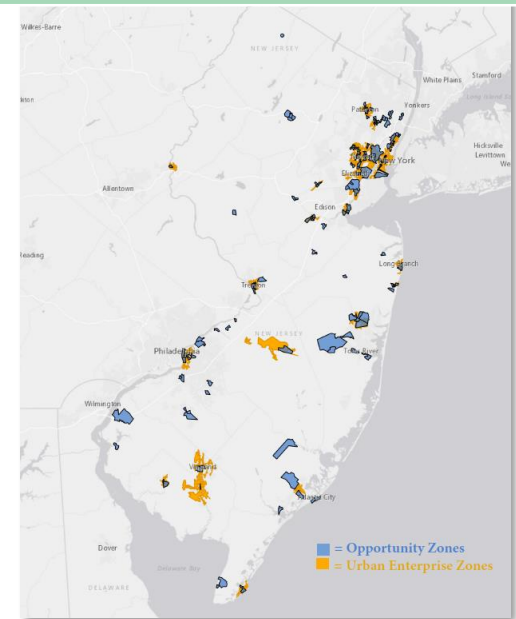
● Appliances: Refrigerator / Water Heater / Clothes Washer / Dryer / More

● **Enhanced Rebates Announced in New Jersey**

● Solar Transition Stakeholder Workshops

● Community Solar Energy Pilot Program

Eligibility Basis	Criteria
<p>➤ Located in an Urban Enterprise Zone (UEZ)</p>	<p>The building where equipment is or will be installed must be located within the bounds of an Urban Enterprise Zone (UEZ). Please follow the steps below to confirm your facility is within the qualifying zone.</p> <p>The building location must be checked against the NJ Community Asset Map.</p> <ol style="list-style-type: none"> 1. Enter the address of your building in the field at the top of the map. 2. Under the Layers menu on the left side of the screen, scroll down to Urban Enterprise Zones and <i>check</i> to enable the layer. 3. Print or save a screenshot of the page to include with your submission. <p>For the avoidance of doubt, companies do not need to become a Certified UEZ Business to be eligible for enhanced incentives from NJCEP.</p>
<p>➤ Located in an Opportunity Zone (OZ)</p>	<p>The building where equipment is or will be installed must be located within the bounds of an Opportunity Zone (OZ). Please follow the steps below to confirm your facility is within the qualifying zone.</p> <p>The building location must be checked against the NJ Community Asset Map.</p>



[Click here for a link to NJ Community Asset Maps](#)

Benchmarking

NJCleanEnergy.com/BENCHMARKING

MEASUREMENT &
AUDITS

WHO Commercial, Industrial, Agricultural, Government, 501(c)(3) Non-Profit, and Institutional Entities

COST Free

- WHY**
- Compare your building to other similar buildings nationally
 - Suggestions for improving operations and maintenance
 - Personalized incentive program eligibility and account manager follow-up support
 - ENERGY STAR® Portfolio Manager account setup and score

Great opportunity to be a leader in benchmarking energy and water use, prior to the 2024 deadline.



Benchmarking

NJCleanEnergy.com/BENCHMARKING

MEASUREMENT & AUDITS

Energy Consumption & Cost

Analysis Period: July 2018 – June 2019

Energy Benchmark	Example Building	Average Building
EPA Portfolio Manager Score	48	50
Site Energy Intensity ¹ (kBtu/sf)	85.9	82.2
Source Energy Intensity ² (kBtu/sf)	88.3	90.8
Energy Cost	\$13,841	\$13,082
Total GHG Emissions (Metric Tons CO ₂ e)	43	40

U.S. EPA Portfolio Manager Account:

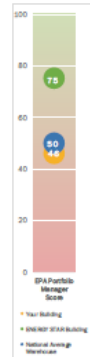
Your building was benchmarked using the U.S. Environmental Protection Agency's (EPA's) Portfolio Manager tool. The impact of factors outside of your control, such as location, occupancy and operating hours, are removed. Some building types will be provided with a 1-100 ranking of a building's energy performance relative to the national building market.

46

Your building received an EPA benchmark score of 46. Using the U.S. EPA's building type guidelines, this score is slightly below average when compared to other warehouse/distribution buildings in the United States.

Understanding and tracking energy consumption is one of the first steps in an energy reduction plan. Portfolio Manager is an energy management tool that allows you to track and assess energy and water consumption across your entire portfolio of buildings in a secure online environment. We encourage you to use Portfolio Manager to track your energy and water consumption month to month. An account has been set up for Example NJ Commercial Building. The login information is as follows:

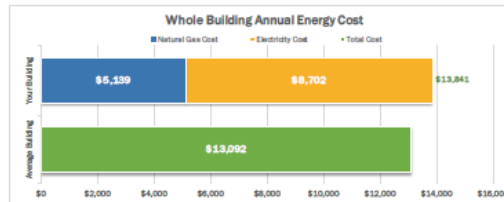
Website: <http://www.eportmanager.gov/enr/energy/>
 User Name: ExampleCommercialBuilding
 Password: SavingEnergy2019



¹ Site Energy Intensity is a measure of a building's annual energy utilization per square foot. Site energy intensity score is a good measure of a building's energy use, and is utilized regularly for comparison of energy performance for similar building types.

² Source Energy Intensity is a measure of the building's energy usage in addition to the transmission, delivery and production losses.

Energy Consumption & Cost



Energy Cost:

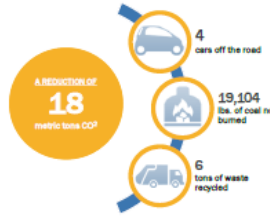
The annual energy cost for Example NJ Commercial Building is \$13,841 (\$5,139 natural gas + \$8,702 electricity). Example NJ Commercial Building spends \$1.38 per square foot to power the building. The estimated average annual energy cost for a building of similar square feet, type, and usage is \$13,092. Therefore, your building's energy costs are slightly higher than average when compared to other warehouse/distribution buildings nationwide.

Electricity costs make up 63% of your building's total annual energy cost. Natural gas costs make up 37% of your building's total annual energy cost.

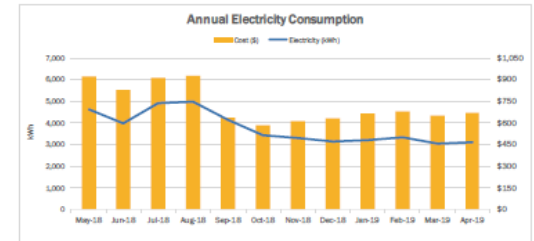
Carbon Emissions:

The energy consumption for Example NJ Commercial Building is equivalent to carbon emissions of 43 metric tons of CO₂, compared to the national average of 40 metric tons of CO₂ for a similar building type. Your building's GHG emissions are slightly higher than average.

If you improved your building's energy usage to meet ENERGY STAR level the energy savings would be equivalent reducing carbon emissions by 18 metric tons of CO₂. This reduction would be equivalent to:



Energy Consumption & Cost



Electricity Usage:

The annual electricity consumption for Example NJ Commercial Building is 4.5 kWh per square foot. This amount of electricity is reasonable compared to similar building types in New Jersey.

Electricity Cost:

The property's electricity rate is slightly higher than the state average of \$0.17/kWh. It may be beneficial to contact your electric provider or a third-party provider to discuss rate options.

	Electricity Use Description	Example Building	Area of Concern Scale
USAGE	Annual Usage (kWh)	45,114	Low
	Annual Usage per Sq. Ft. (kWh/sf)	4.5	
COST	Annual Cost (\$)	\$8,702	Medium
	Annual Cost per Sq. Ft. (\$/sf)	\$0.87	
	Average Annual Cost (\$/kWh)	\$0.19	

Summary & Recommendations:

The amount of electricity shown above is slightly lower than average. However, the cost of that electricity is higher than average. As mentioned, it may be beneficial to contact your electric provider to discuss rate options. If not already in use, ENERGY STAR® products, LED and other lighting technologies could reduce the power demand needed and lower monthly electricity bills.

Local Government Energy Audit

NJCleanEnergy.com/LGEA

MEASUREMENT &
AUDITS

WHO Local Government, New Jersey Colleges and Universities, and 501(c)(3) Non-Profit buildings with an average yearly demand >200kW*

INCLUDES
BENCHMARKING

COST Free

WHY

- Inventory of all energy-consuming equipment and line by line program eligibility, savings and costs
- Comprehensive utility bill analysis
- Facility benchmarking
- Feasibility for solar and combined heat & power

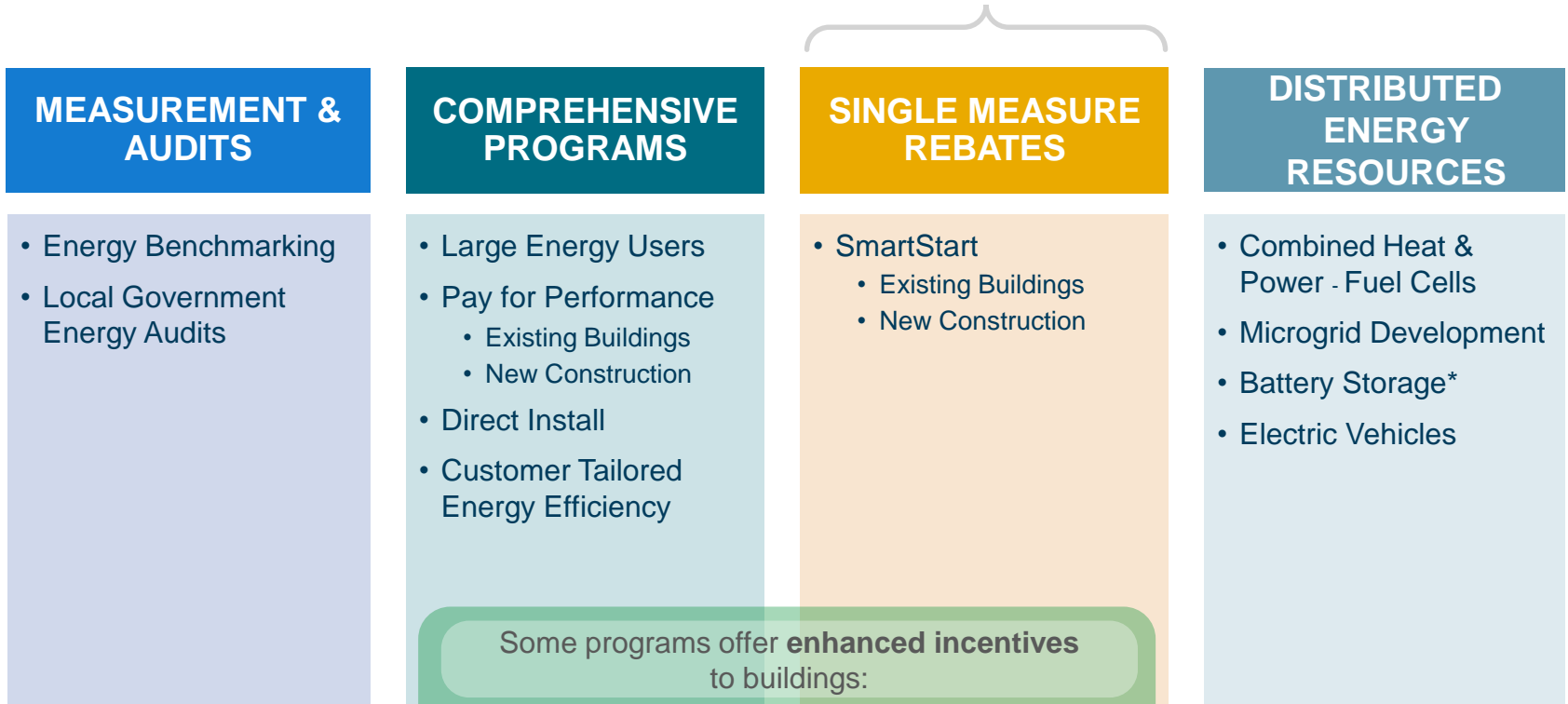
INCENTIVE CAP

- \$100,000 per entity (covers most small to large entities)
- \$300,000 per 501(c)(3) hospital
- \$300,000 per entity interested in ESIP

* Inquire about the waivers available to buildings ≤ 200 kW average

C&I Portfolio of Programs

Eligible Sectors: Commercial, Industrial, Government, Schools, Non-Profit, Institutional and Multifamily



** coming soon!*

SmartStart

NJCleanEnergy.com/SSB

SINGLE MEASURE
REBATES

WHO

All C&I: commercial, industrial, agricultural, government, non-profit institutional, and multifamily customers



SIZE TO QUALIFY

N/A

ABOUT

- Individual high efficiency equipment rebates for new construction, renovation, remodeling, equipment replacement
- Prescriptive and custom designed measures

INCENTIVE CAP

- Prescriptive: \$500,000 for each electric or gas account
- Custom, lesser of the following:
 - \$0.16/kWh and/or \$1.60/therm saved annually;
 - 50% of incremental installed cost; and
 - Buy-down to 1 year payback based on incremental cost and savings



PRESCRIPTIVE INCENTIVES

- Electric Chillers
- Gas Cooling
- Electric Unitary HVAC
- Ground Source Heat Pumps
- Gas Heating
- Variable Frequency Drives
- Gas Water Heating
- Lighting/Lighting Controls
- Refrigeration Doors
- Refrigeration Controls
- Food Service Equipment
- Refrigerator/Freezer Motors

Existing buildings only:

DOUBLE INCENTIVES
for OZ/UEZ, local
government (munis &
counties), K-12 public
school, or designated
as affordable housing

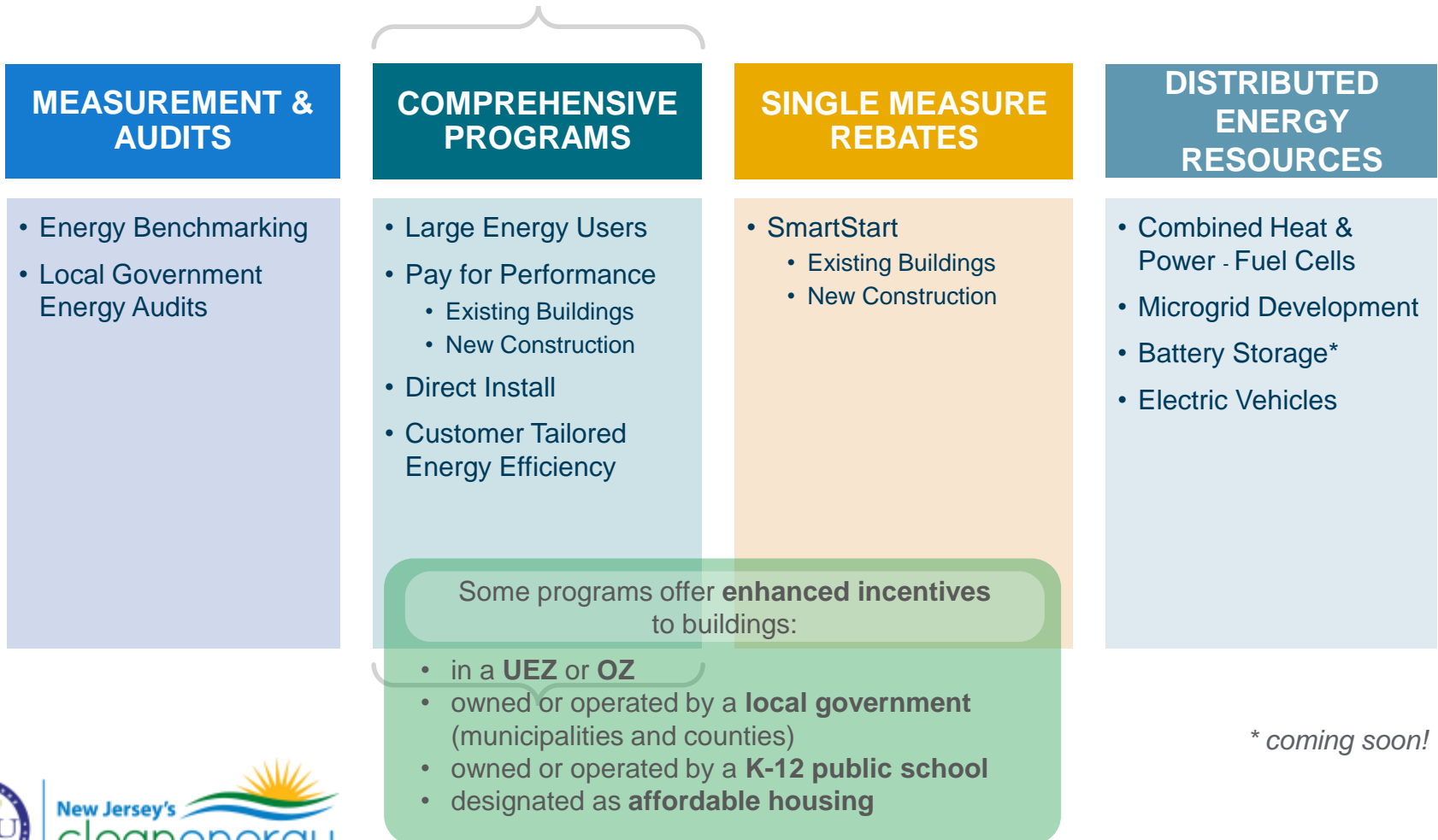


CUSTOM INCENTIVES

- New or innovative technologies proven to be cost-effective and not listed as prescriptive
- Must meet code for retrofit projects or exceed code for new construction
- Project pre and post inspection required

C&I Portfolio of Programs

Eligible Sectors: Commercial, Industrial, Government, Schools, Non-Profit, Institutional and Multifamily



CTEEP: Customer Tailored Energy Efficiency

COMPREHENSIVE PROGRAMS

NJCleanEnergy.com/CTEEP

- WHO** C&I customers seeking a streamlined/single application for participants submitting for multiple different technology types
- SIZE TO QUALIFY** N/A
- ABOUT**
- On site assistance available
 - One application form for multiple prescriptive or custom measures
 - Utilizes SmartStart Incentives
 - Additional \$10,000 technical incentive available to offset soft costs associated with developing and planning custom projects
- INCENTIVE CAP**
- Up to \$500,000 for each electric or gas account
 - Same Prescriptive or Custom incentives as the SmartStart Buildings program

CTEEP: Customer Tailored Energy Efficiency

COMPREHENSIVE PROGRAMS

NJCleanEnergy.com/CTEEP



Same incentive values as SmartStart

Pay for Performance

NJCleanEnergy.com/P4P

COMPREHENSIVE
PROGRAMS

WHO

Large C&I existing buildings or new construction seeking two or more energy efficiency measures with a minimum 15% savings

SIZE TO QUALIFY

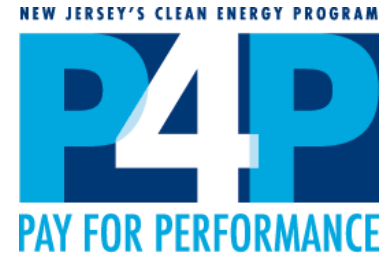
Annual peak demand 200+ kW in the previous year for existing buildings or over 50,000 square feet of planned new construction

ABOUT

A pre-approved Participating Partner will streamline the program and guide users through the program phases

INCENTIVE CAP

- 50% of project cost (or 80% for eligible enhanced incentive* projects) up to \$2M per project / \$4M per entity annually
- Incentive payments #2 and #3 are increased for eligible enhanced incentive* projects

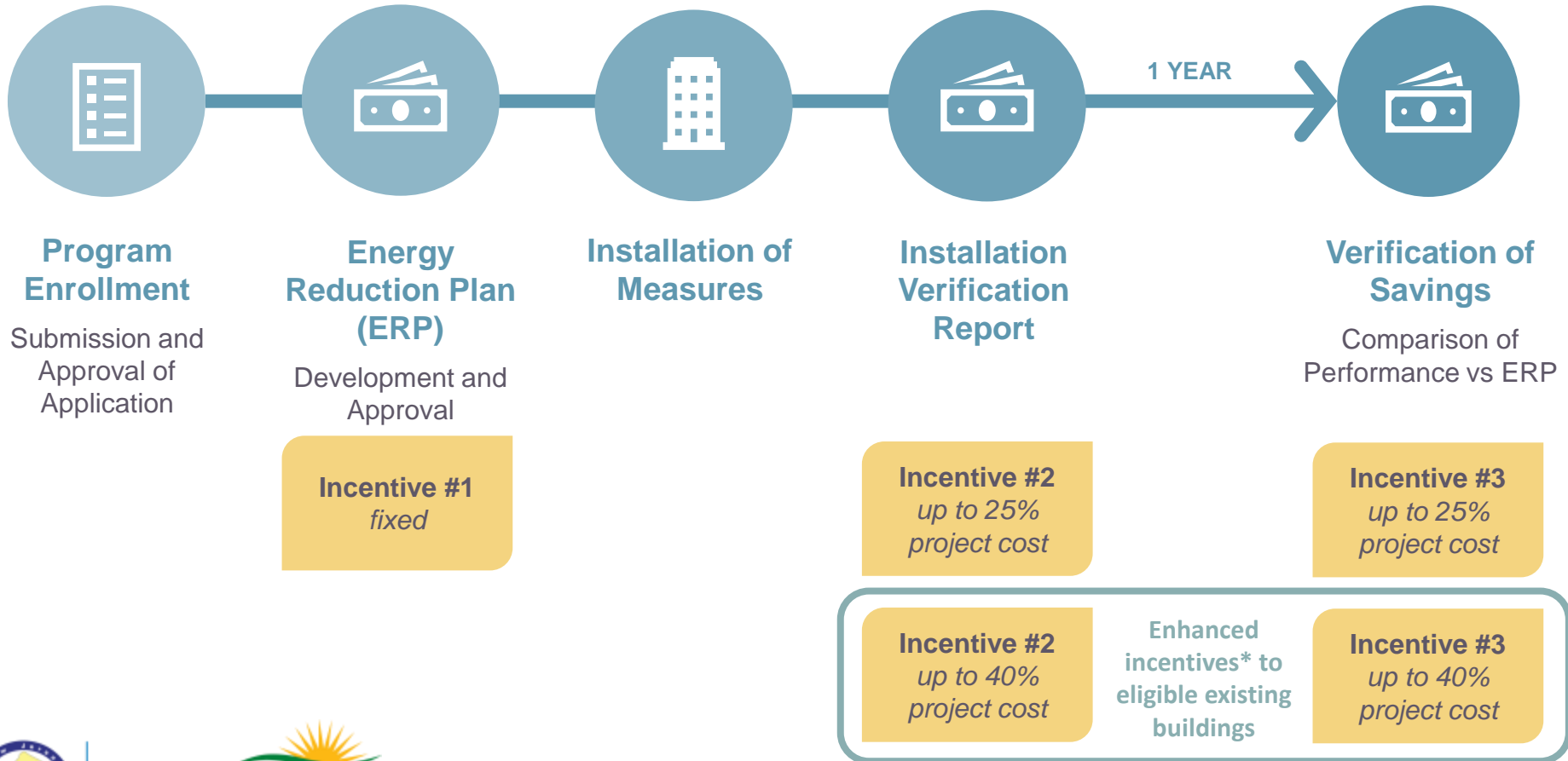


* Enhanced incentives are available to existing buildings in a UEZ/OZ, K-12 public school, local governments (municipalities and counties), or designated as affordable housing

Pay for Performance

NJCleanEnergy.com/P4P

COMPREHENSIVE PROGRAMS



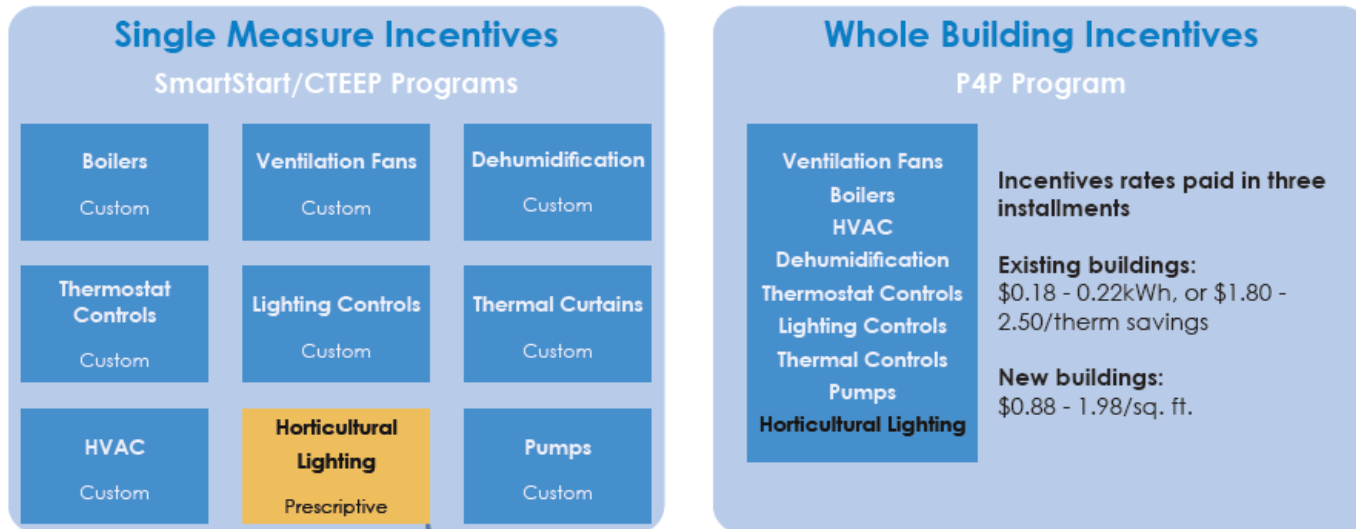
* Enhanced incentives are available to existing buildings in a UEZ/OZ, K-12 public school, local governments (municipalities and counties), or designated as affordable housing

New: Indoor Horticulture

NJCleanEnergy.com/SSB and NJCleanEnergy.com/CTEEP



SmartStart/CTEEP Prescriptive incentives are now available to indoor horticultural lighting retrofits or new construction. In addition, and **SmartStart/CTEEP Custom incentives** continue to includes new or innovative technologies proven to be cost-effective and not listed as prescriptive. The whole building **Pay for Performance** Program is also available:



Apply on a single application through the Customer Tailored EE Program (CTEEP)

Custom Incentives:
 Lesser of \$0.16/kWh, \$1.60/therm savings, 50% project cost, buy-down to 1.0 year payback

Prescriptive Horticultural Lighting Rebates

Facility Type and Runtime Hours:	LED Fixture Wattage <500	LED Fixture Wattage >500
DLC- listed LED for use in Indoor Grow Facilities (>3000 hours/year)	\$150/fixture	\$250/fixture
DLC-listed LED for use as supplemental lighting in Indoor Grow Facilities that primarily use natural sunlight (<3000 hours/year)	\$50/fixture	\$200/fixture

Existing building projects located in Urban Enterprise Zones or Opportunity Zones may be eligible for double the incentive.

Direct Install

NJCleanEnergy.com/DI

COMPREHENSIVE
PROGRAMS

WHO

Small to medium sized C&I existing facilities seeking to replace inefficient equipment

SIZE TO QUALIFY

Average annual peak demand <200 kW in the previous 12 months

ABOUT

- A pre-approved regional Participating Contractor will do a walk-through evaluation and guide users through the program phases
- Turn-key process with fast project turnaround time

INCENTIVE CAP

- \$125,000 incentive funding per project/building (\$250k for eligible enhanced incentive* projects), or
- \$250,000 per entity (\$500K ESIP; \$4M for eligible enhanced incentive* entities)



* Enhanced incentives are available to existing buildings in a UEZ/OZ, K-12 public schools, local governments (municipalities and counties), or designated as affordable housing

Direct Install

NJCleanEnergy.com/DI

COMPREHENSIVE
PROGRAMS

Facilities in Urban Enterprise Zones (UEZ), Opportunity Zones (OZ), local government (municipalities and counties), K-12 public school, or designated as affordable housing:

INCENTIVE FUNDING

Up to **80%** of installed cost is paid directly to the contractor

CUSTOMER

20% of installed cost

All other eligible facilities:

INCENTIVE FUNDING

Up to **70%** of installed cost is paid directly to the contractor

CUSTOMER

30% of installed cost

SMARTSTART, CTEEP, DI & P4P: FINANCING OPTION

- SJG provides 0% financing options that will cover up to \$130,000 per year.
- 10 year term-repayments made on regular monthly gas bill
- Need to review project with SJG to confirm project qualifies.
- Questions? Contact:
Peter Druckenmiller
Program Manager
South Jersey Gas
609-572-4271
wdruckenmiller@sjindustries.com



Utility Company Programs



Peter Druckenmiller,
Program Manager
Energy Efficiency and Conservation

Utility Company Programs



DIRECT INSTALL PROGRAM

South Jersey Gas has partnered with NJ's Clean Energy Program to help your business save energy and reduce operating costs.

- Direct Install pays up to 70% of retrofit costs
- **SJG offers up to \$130,000 at 0% interest for five years for the remaining 30% of project costs**
- Eligible equipment includes lighting, HVAC, refrigeration and more.

Utility Company Programs



NEW JERSEY SMARTSTART BUILDINGS

If you need to replace your building's energy equipment or systems, NJ SmartStart Buildings can help.

- Incentives are available for upgrading heating and cooling systems, water heaters, lighting and controls, refrigeration/freezer ECM motors, VFDs and more.
- **South Jersey Gas offers up to \$130,000 at 0% interest for tens years for the remaining 30% of project costs**

Utility Company Programs



PAY FOR PERFORMANCE PROGRAM

Take a whole building approach to improving the overall energy use and efficiency of your facility.

- Designed for larger building, Pay for Performance can help you save up to 15% or more on energy consumption.
- The more energy you save, the more incentives you earn through the program.
- **Plus, get up to \$130,000 at 0% interest for ten years from South Jersey Gas.**

Utility Company Programs



Incentive Summary

DIRECT INSTALL

The program pays up to 70% of retrofit costs plus, South Jersey Gas offers up to \$130,000 at 0% interest for five years for the remaining 30%

PAY FOR PERFORMANCE

Up to \$130,000 at 0% interest over 10 years from South Jersey Gas

SMARTSTART BUILDINGS

Up to \$130,000 at 0% interest over 10 years from South Jersey Gas

Pete Hatton Hutchinson Mechanical Services



6 Easy Steps



Direct Install is brought to you by the
New Jersey Board of Public Utilities.

1) Contact Hutchinson at Dlcoordinator.com

We will forward correspondence requesting 12 months of recent gas/electric bills

2) Complete & sign Application/Participation Agreement

3) Contractor conducts on-site Energy Assessment

- Identifies eligible measures
- Provides report – incentives, savings, costs, payback

6 Easy Steps



Direct Install is brought to you by the
New Jersey Board of Public Utilities.

- 4) You select eligible measures and sign “Scope of Work”
 - Project submitted to TRC for approval with periodic pre-inspections by TRC
- 5) Contractor installs measures
 - Hutchinson QC inspects
 - Owner signs “Measure Acceptance Form”
 - Random QC by TRC
- 6) Payments
 - Program pays up to **80%** directly Hutchinson
 - You pay 20% balance directly to Hutchinson (typically in form of a deposit)
 - Financing for the **30%** customer portion is available to qualified candidates

Program Overview



Direct Install is brought to you by the
New Jersey Board of Public Utilities.

- **Energy Assessments identify eligible measures**
 - Lighting and Occupancy sensors
 - HVAC
 - Pipe Insulation,
 - Motors and Variable Speed Drives
 - Refrigeration Measures
 - Low Flow Water Devices
- **No cost for Energy Assessment**
- ***Improvements must pass a **Total Resource Cost Test** whereby the “low hanging fruit” justifies HVAC replacements.***
- **One year labor/materials warranty (plus equipment warranties)**
- **Customer is responsible for costs to correct code or safety violations**
- **Reviews & inspections - Program Manager (TRC)**

"BELIEVE IT OR NOT" ... ENERGY EFFICIENCY SOLUTIONS CAN SAVE YOUR BUSINESS MONEY

HIGHLIGHTS

NJCEP Direct Install incentives: \$44,264

Technology:

- High-efficiency Lighting
- Packaged HVAC Units

Direct Install Paid 65% of Upgrades

Estimated Annual Savings:

- \$10,902
- 78,110 kWh
- 561 therms
- 58.2 metric tons of CO2 reduced



"Working with Hutchinson has been great," says Connelly. "They kept me informed every step of the way throughout the process and enabled us to take advantage of energy-saving rebates."

Chris Connelly, Manager

Ripley's Believe It or Not! Atlantic City

LADACIN BECOMES THREE-TIME DIRECT INSTALL CUSTOMER

HIGHLIGHTS

NJCEP Direct Install incentives: \$82,000

Technology:

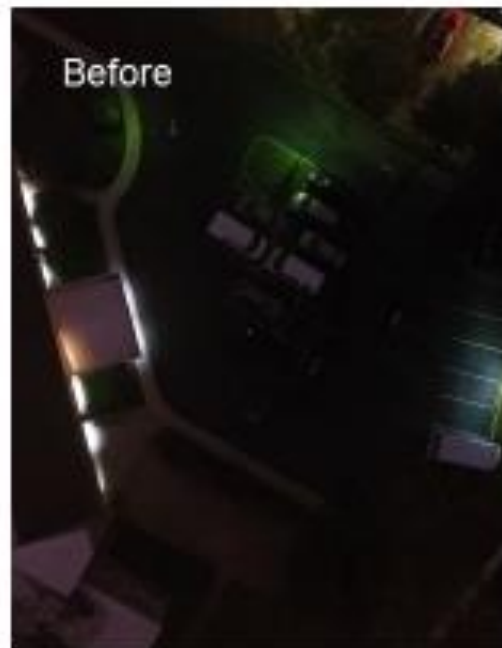
- High-efficiency Heating, Cooling units
- High-efficiency Heating and Domestic Boilers
- High-efficiency, LED lighting

Direct Install Paid 70% of Upgrades

Project Payback: 1.74 years

Estimated Annual Savings:

- \$20,000
- 35,839 kWh
- 8,069 therms
- 68 metric tons of CO2 reduced



“Through Direct Install, the facility now has updated LED lighting. The difference is dramatic!”

Patricia Carlesimo, Executive Director
LADACIN Network

FLYING FISH BREWING COMPANY

ENERGY EFFICIENCY UPGRADES GENERATE SAVINGS

HIGHLIGHTS

NJCEP Direct Install Incentives: \$28,414

Technology

- High-efficiency Lighting
- Packaged HVAC Units
- Dual Enthalpy and Electronic Fuel-use Economizers

Direct Install Paid 70% of Upgrades

Project Payback: 2.6 years

Estimated Annual Savings:

- \$4,015
- 35,644 kWh
- 637 therms
- Reduction of carbon footprint
 - 29 Metric Tons



“The Direct Install savings was dramatic. Any business that isn’t taking advantage is missing a great opportunity. Flying Fish is committed to sustainability – it’s not only good for the environment, but in the long run it’s good business.”

Gene Muller, Founder
Flying Fish Brewing Company

CITY INVINCIBLE-SPIEZLE ARCHITECTURE GOES GREEN WITH DIRECT INSTALL

HIGHLIGHTS

NJCEP Direct Install incentives: \$42,235

Technology:

- High-efficiency Lighting
- Packaged HVAC Units

Direct Install Paid 58% of Upgrades

Estimated Annual Savings:

- \$4,932
- 26,308 kWh
- 1447 therms
- 26.3 metric tons of CO2 reduced



“ Direct Install cut my capital costs significantly not to mention the annual utility costs. The investment in Direct Install upgrades will pay for themselves in little time – now that’s ROI!”

Angelo Alberto, Principal

City Invincible-Spiezle Architecture

WOODBURY NISSAN

ENERGY EFFICIENCY UPGRADES GENERATE SAVINGS

HIGHLIGHTS

NJCEP Direct Install incentives: \$49,978

Technology

- High-efficiency Lighting
- Packaged HVAC Units
- Energy Saving Boilers

Direct Install Paid 70% of Upgrades

Project Payback: 1.96 years

Estimated Savings: \$71,398 of upgraded equipment for only \$21,420 for a savings of: \$49,978

Reduction of carbon footprint –49.6 Metric Tons



“The Hutchinson team provided exceptional service. I live and breathe customer service in my business, and truly recognize and appreciate it when I receive it. And Hutchinson provided that service.”

Tina Wright, President
Woodbury Nissan

WOODBURY NISSAN

ENERGY EFFICIENCY UPGRADES GENERATE SAVINGS

HIGHLIGHTS

NJCEP Direct Install incentives: \$49,978

Technology

- High-efficiency Lighting
- Packaged HVAC Units
- Energy Saving Boilers

Direct Install Paid 70% of Upgrades

Project Payback: 1.96 years

Estimated Savings: \$71,398 of upgraded equipment for only \$21,420 for a savings of: \$49,978

Reduction of carbon footprint –49.6 Metric Tons



“The Hutchinson team provided exceptional service. I live and breathe customer service in my business, and truly recognize and appreciate it when I receive it. And Hutchinson provided that service.”

Tina Wright, President
Woodbury Nissan



RESIDENTIAL PROGRAMS

Residential Portfolio of Programs

NJCleanEnergy.com/RESIDENTIAL

HOME PERFORMANCE W/ ENERGY STAR®

- Whole-house and safety solutions for existing homes
- Air sealing, insulation, heating and cooling upgrades
- Up to a \$4,000 rebate + 0% financing up to \$10,000 or .99% up to \$15,000

WARMADVANTAGE & COOLADVANTAGE

- Stand-alone rebates for heating and cooling systems
- Furnaces, boilers, water heaters, central air conditioners, mini-splits, heat pumps, etc.



ENERGY EFFICIENT PRODUCT REBATES

- Includes ENERGY STAR® certified refrigerators, dryers, washers, air purifiers, dehumidifiers, room air conditioners
- Refrigerator/freezer recycling and lighting discounts



RESIDENTIAL NEW CONSTRUCTION

- Builders work with a rater to properly certify the homes to ENERGY STAR® certified or Zero Energy Ready Home levels



COMFORT PARTNERS

- A FREE program including lighting upgrades, hot water conservation, replacement of fridges and thermostats, insulation upgrades and heating and cooling maintenance **for income eligible families**

Some programs offer enhanced incentives for homes located in an UEZ, low to moderate income and affordable housing units

What is Home Performance?

NJCleanEnergy.com/HP

HOME PERFORMANCE
WITH ENERGY STAR®

- Provides whole-house energy assessments and comprehensive energy efficient upgrades for existing homes
- Addresses comfort, indoor air quality, health & safety, and energy usage problems
- The program uses specially trained/certified Building Performance Institute (BPI) GoldStar contractors



Incentives

NJCleanEnergy.com/HP

HOME PERFORMANCE
WITH ENERGY STAR®

Incentives based on Total Energy Savings for single-family homes (1-4 units) & townhomes

\$2,000 up to \$4,000 cash incentive

Plus:

- 0% Interest loan up to \$10,000 or
- 0.99% interest loan up to \$15,000
- Up to \$1,000 Urban Enterprise Zone (UEZ), low to moderate income bonus or affordable housing bonus



More Information

GREG REINERT

South Jersey Outreach Mgr.
GReinert@njcleanenergy.com
732-340-6385

VISIT

NJCleanEnergy.com

NEWSLETTER

NJCleanEnergy.com/NEWSLETTER

LISTSERVS

NJCleanEnergy.com/LISTSERVS



@NJCleanEnergy

*Become a
Trade Ally:
NJCleanEnergy.com/SIGNUP*

THANK YOU

